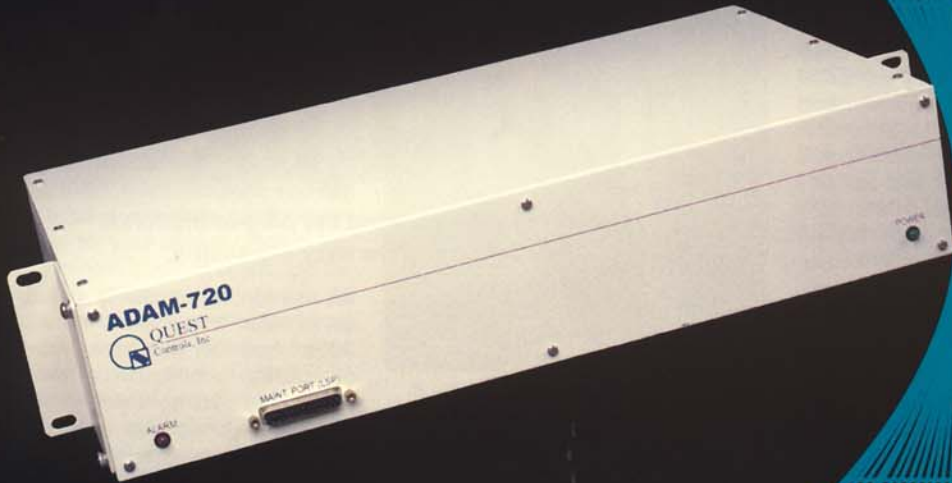


ADAM-720

INTELLIGENT MONITORING THAT
BRIDGES THE TECHNOLOGY GAP



QUEST
Controls, Inc.

ADAM™-720 Intelligent Monitoring that Bridges the Technology Gap

REAL-TIME NETWORK SURVEILLANCE

The ADAM-720 is a network surveillance and management system providing real-time surveillance of every alarm type, from sophisticated fiber optic performance monitoring to the simplest discrete alarm. The ADAM-720 can be deployed in traditional telephone company applications, private networks or stand-alone building alarm applications.

Today's central office equipment spans several generations of technology, employing a wide assortment of alarm indication methods – Serial TBOS, TABS and E2A Alarms, Wet and Dry Contact Closures, Multi-contact Alarm Sets and the new generation of Serial TL1 Alarms for SONET Compatibility.

INTEGRATES EQUIPMENT TO SPAN TECHNOLOGY GAPS

QUEST CONTROLS has a solution to bridge the technology gap between past, present and future Telco Environments. Rather than continuously updating obsolete monitors or limiting yourself to a mediation only device for TL1 equipment, install the ADAM-720 to meet your needs now and well into the future.

FEATURES AN INTELLIGENT PROGRAMMABLE MONITOR

The ADAM-720 is an end office-type system perfect for all applications. It can monitor up to 700

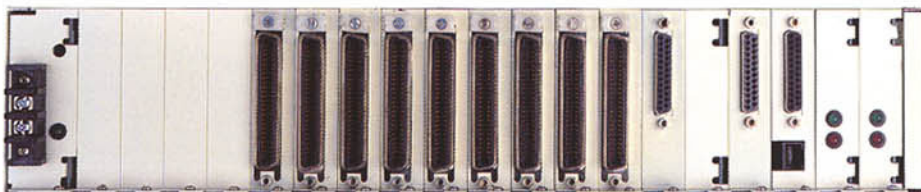
Discrete Alarm Points or 56 Serial Data I/O Ports (i.e. TBOS) or any combination thereof. The ADAM 720 is also capable of expanding to 2600 Discrete Alarm Points. QUEST CONTROLS designed the ADAM-720 specifically for placement in the Central Office or Remote Buildings. It continuously analyzes alarm data from a variety of sources. When the status of a monitored device changes, the ADAM-720 instantly sends a TL1 Message completely describing the event. Moreover, the information in a single message can be derived from

Analysis (NMA) System and other Operating Systems.

Simultaneous communication is possible via several methods: an X.25 Packet-Switched Network or physical circuit, RS232, RS422/485 and Modem Asynch or Synch.

REMOTE CONFIGURATION

The alarm messages are automatically sent to NMA through the designated port, freeing the NMA from



*Inside rack view showing the plug-in modules.
This feature offers easy expansion.*

multiple simultaneous Contact Closures, such as those provided by Digital Loop Carrier Systems like AT&T's SLC-96 and SLC Series 5.

When necessary, the ADAM-720 automatically activates Alarm Cutoff and Bank Loopback relays on the DLC System in alarm. Using QUEST CONTROLS' unique Programmable Alarm Logic, you can completely control how the ADAM-720 interprets alarm points in a multiple set, where status indicators are shared among several different equipment units.

DESIGNED FOR NMA

The ADAM-720 employs standard TL1 Protocol for both autonomous alarm messages and input commands, making it fully compatible with Telcordia (formally Bellcore) Network Monitoring and

the burden of constantly polling for alarm data. In addition, the ADAM-720's internal database may be completely configured remotely, eliminating unnecessary visits to remote monitoring sites.

CONSERVE RACK SPACE

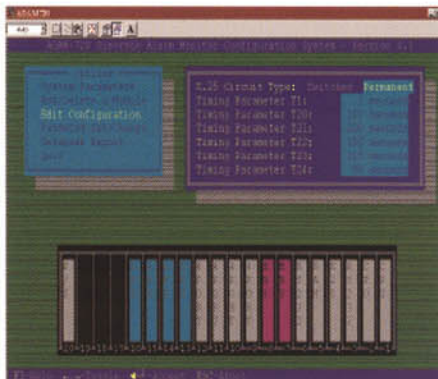
In today's Telecommunication Industry, rack space is at a premium. The ADAM-720's compact, modular design requires only 3.5 inches of standard rack space, making it well suited for CEVs and Equipment Huts. Expansion is accomplished through simple plug-in modules, allowing you to fit the ADAM-720 System to your immediate requirements with no wasted capacity, then easily expand the system as necessary. While a single system is capable of monitoring all alarms in most Central Offices, additional systems may be "daisy-chained" together with standard serial cables to monitor your largest applications.

ADAM™-720 Intelligent Monitoring that Bridges the Technology Gap

SYSTEM POWER AND FLEXIBILITY WITHOUT THE COMPLEXITY

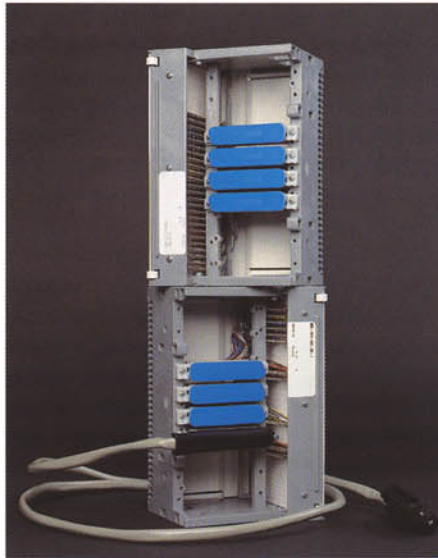
The ADAM-720 offers power and flexibility without the bother and complexity associated with other systems. Every aspect of the ADAM-720's operation is controlled with user-friendly software. No error-prone hardware switches and jumpers to set. Build your configuration database on any IBM®-compatible PC at your office, using QUEST CONTROLS' graphically-oriented, template-driven Provisioning Software.

Using our Provisioning Software Templates for equipment from all major manufacturers, you can easily build a complete configuration database for your central office in just a few minutes! You can connect to the ADAM-720, either remotely or directly, using a Portable PC and upload your database in only a few keystrokes. For direct communication without the Menu-driven Interface, we also provide an Integrated ASCII Terminal Mode, similar to communication packages like Procomm®, but tailored specifically for ease of use with TL1.



Using the equipment templates in our Provisioning Software, you can configure a complete CO in minutes.

Since a significant portion of the overall cost of a monitoring system is the installation, we designed the ADAM-720 with a number of time-saving, trouble-free features. Standard Telco Connectors on all of our System Modules connect to a variety of pre-connectorized, pre-wired terminal blocks. The result: a dramatic reduction in both wiring labor and miswired contacts.



Standard Telco connectorized cables and pre-wired terminal blocks make installation easy and trouble-free.

FAULT-TOLERANT RELIABILITY

Failure of your Alarm Monitoring System could easily have disastrous effects. The ADAM-720's Optional Redundant CPU Module provides fault-tolerant operation.

The Redundant CPU is automatically activated in the event of a main CPU failure, restoring all system data and continuing standard operation, uninterrupted – you don't need to reset the clock.

NEBS LEVEL III AND FIELD-PROVEN

When our customers needed an Alarm Monitoring System capable of efficiently monitoring DLC Systems while still being able to monitor existing equipment, QUEST CONTROLS responded with the ADAM-720. No other system can provide the ADAM-720's capability in a simple, compact and cost-efficient design. The ADAM-720 has been successfully deployed in hundreds of Central Offices and other remote Telecommunication Facilities world wide. The ADAM-720 has surpassed Telcordia Technologies' (formerly Bellcore) meticulous quality requirements for the X.25/TL1 Compatibility. Additionally, the ADAM-720 has met the testing standards of Telcordia Technologies Network Equipment Building System (NEBS) requirements, "Level III." The design is inherently modular and adaptable, allowing the ADAM-720 to be tailored to your own unique requirements.

QUEST CONTROLS.... YOUR INDUSTRY LEADER

QUEST CONTROLS has provided cutting-edge technology to the Facility Automation Industry for more than a decade. We are continuously researching and developing new technologies to meet the growing demands of the Telecommunications Industry.

The ADAM-720 is the smart way to accommodate your alarm monitoring needs for many years to come. We've efficiently "bridged" the gap between several generations of Telco Equipment with the ADAM-720...the most reliable, cost-effective Alarm Monitoring System available.

ADAM-720 SYSTEM SPECIFICATIONS

HARDWARE

- Up to 700 Discrete Alarms per Unit (Wet & Dry Contact)
- Remote Modem Communications
- Up to 56 Serial Alarm Ports
- Supports RS 232, RS 422/485
- Rack-mounted or Desktop
- Supports Local Terminal & Printer
- Optional Redundant CPU
- NEBS Level III Approved
- Optional Light Enunciator Panel
- 4 ADAMs can be Networked for a Total of 2600 Discrete Alarms

SOFTWARE

- Software Driven and Upgradeable
- Remote Database Downloading
- Windows Environment
- Filtering of Superfluous Alarms
- Supports TBOS Alarms
- TL1 Messaging for All Alarms & Communications
- Easy Configuration of Database
- User-friendly GUI Provisioning Software
- Firmware Upgradeable from Remote Location

PHYSICAL/ENVIRONMENTAL

Operating Environment

- 0°C to 65°C (32°F to 149°F)
- Humidity up to 90% (Non-condensing)

Electrical

- Voltage: -41 to -56 VDC Central Office Battery
- Current: 0.25 Amperes Peak @ -48 VDC
- Power: 12 Watts

Physical

- Height = 3-1/2 inch (8.9 cm)
- Length = 10-1/2 inch (26.7 cm)
- Width = 17-1/2 inch (44.5 cm)
- Weight = 12 pounds (5.44 kg) max. (Fully Loaded)

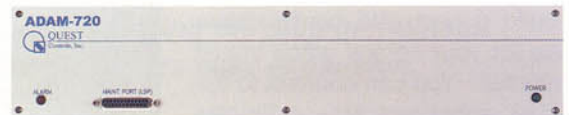
Enclosure

- Aluminum & Steel Designed for 19 or 23 inch (48.3 or 58.5 cm) Rack-mounting

Warranty - 2 Years

FEATURES

- Rack-mounted 3.5" High
- (19" or 23" Rack-mounting)
- Battery-backed Database
- -48VDC Power 0.25 AMP Max
- Dial-up or Dedicated Transmission
- Remote Access from any PC
- Interactive Command Issuance
- Collect/Process Performance Data
- Messages/Diagnostic in English
- Password Security
- Independent Port Baud Rates
- Fully SONET Compatible
- Prioritized Audio and Visual Alarms
- Total Vendor Independence
- Modular Seamless Growth



Authorized ADAM-720 Representative:



208 9th Street Drive West
Palmetto, Florida 34221