

Test and Validation for Network Installations

NANA[®]

Near-end Automatic Network Authenticator



Features include:

- **Test and validation of networks to significantly reduce installation times**
- **Wireless network testing**
- **Automatic router configuration**
- **Customer side testing**
- **Network side testing**
- **Wizard modes to automate the testing process**
- **Inference engines for diagnosing problems and communicating resolutions to non-technical personnel**
- **Detailed logging of network traffic with automatic upload to control center**
- **Context sensitive help screens**



NANA[®] provides multiple testing solutions to the myriad of problems that can occur during the installation, turn-up, and everyday maintenance of your revenue generating network (FTTx, xDSL, ATM, WAN).

- **Runs standalone via USB Flash Key, or integrated with a Linux[®] Distribution**
- **Supports automatic programming of customer routers relieving the installer of time consuming and error-prone operations**

Network side testing. Testing towards the network outside the customer's premise or inside can quickly identify network connectivity problems, router collisions, and bandwidth/speed issues; eliminating the customer's equipment and wiring as a problem.

Customer side testing. Testing can be done at any point along the premise network connection. It has the ability to provide network connections to the customer equipment identifying wiring troubles, configuration issues, and authentication problems. It can emulate a router to verify router operation.

Latest Enhancements to NANA[®]

Wireless network testing. NANA[®] offers a new Wireless Wizard on the main menu. Behind this wizard, a NANA[®] user can walk around an installation and detect available wireless networks. NANA[®] will display the signal strength, network type, SSID, and encryption status and constantly update them as the user's environment changes. You then have the option of joining one of the networks in either a DHCP or Static IP mode.

Automatic router configuration. Multiple static IP connections can be chained together, eliminating the need to re-configure the system to test every connection. Additionally, a powerful scripting language contained inside NANA[®] allows for quick and accurate automatic configuration of industry standard routers used in business applications.

Pass-through testing. After Network and Customer sides have been verified, NANA[®] will pass data from the Customer PC to the internal network (and vice versa.) All of this data will be logged and analyzed for errors.

Wizard mode. NANA[®] provides a graphical Wizard Mode that asks a few simple questions to get the testing of network and customer systems done in a hurry.

Detailed logging. All tests are logged and the data is retained in an easy to read format that can be downloaded to a server within the network. There, the information can be analyzed to verify field operations as well as provide Network-wide status.

Inference Engines. NANA[®] inference engines take the results of the testing and make decisions about the next step in fixing a problem. The steps are clear and understandable and can be changed to meet your particular needs.

NANA[®]

Near-end Automatic Network Authenticator

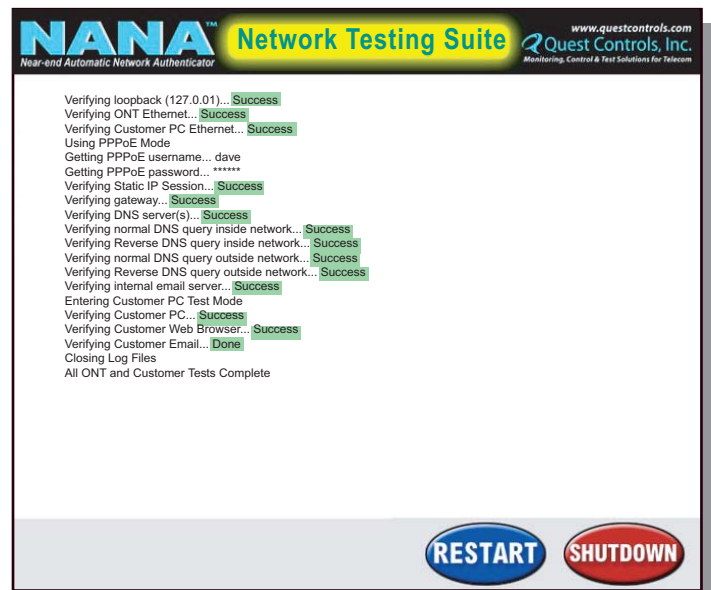
Test and Validation of Networks to Significantly Reduce Installation Times. With the Wizard Mode and powerful Inference Engines, training time for technicians is reduced dramatically. NANA[®] has been called "the great equalizer"; because, regardless of the technician's network familiarity, NANA[®] enables almost anyone to verify operation and quickly locate and repair problems.



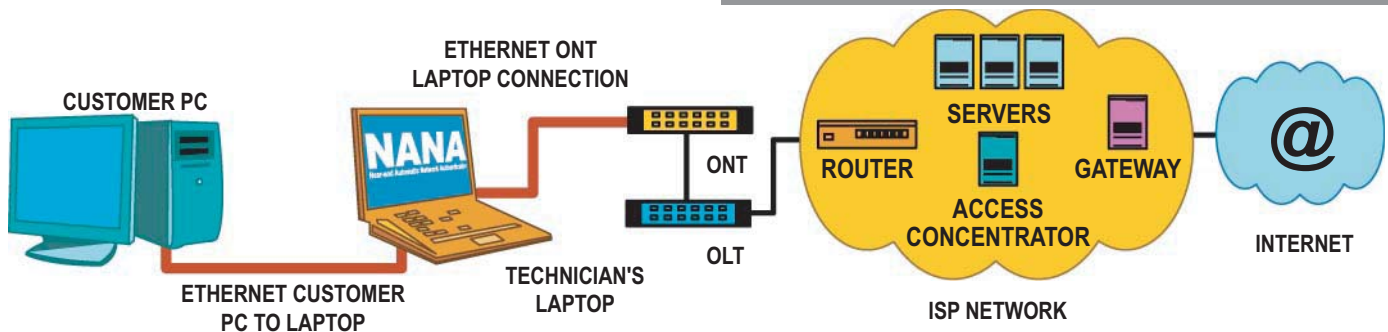
Convenient USB Drive

Automated Business Installations. Multiple Static IP connections can be chained together, eliminating the need to re-configure the system to test each connection. Additionally, a powerful scripting language contained inside NANA[®], allows for quick and accurate automatic configuration of industry standard routers used in business applications. Reducing time spent on configuring these routers from an hour or more to a few seconds.

Linux based. The software is all Linux based and developed using open source tools and utilities present in standard Linux[®] distributions. No more tying your hands to various Microsoft[®] operating systems. There are source licenses also available if you or your company feel like a bit of tweaking.



NANA[®] uses an intelligent mixture of easy-to-use graphics, buttons, and self-explanatory text to help a technician navigate through a trouble call in as few steps as possible.



Description	Part #
NANA [®] testing software kit (includes: testing software USB stick, NIC device & testing cable kit)	150738
NANA [®] testing software USB stick	300193
NANA [®] testing Cable Kit	150719
NANA [®] NIC Device	300192

Quest Controls, Inc.
Monitoring, Control & Test Solutions for Telecom
208 9th Street Drive West, Palmetto, FL 34221
Tel: (941) 729-4799 • Fax: (941) 729-5480
www.questcontrols.com

nana0606v3